

# LD-CO/A

## Wireless CO Sensor

The LD-CO/A is designed to measure and report levels of Carbon Monoxide and ambient temperature. The sensor is powered from ambient room light or line power: in prolonged low light environments ensures continued operation for over 4 days of maintenance free operation.

This Wireless CO Sensor will send telegrams automatically the sampling rate is 10 mins, moreover the rate can rise with the increasing CO concentration.

GENERAL DATA

Power supply	Indoor light/Battery/External power
Operating temperature	-20°Cto +60°C
CO measurement range	0~1000ppm±2ppm
Temperature measurement range	0~40°C±0.5°C
Humidity measurement range	0~100% RH
Sampling rate	Measurement:20s(linepower)/5min(eco) transmission: 20s/15min/30 min dependent on CO conditions

MECHANICAL DATA

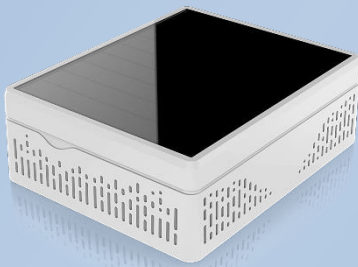
Dimensions	85x70x26mm
Material	PC, white
Installation	Pasted

ELECTRICAL DATA

Start-up time	2.5 mins/400lx/25°C
Operating life in Darkness	4 days

WIRELESS DATA

Antenna	Internal
Radio technology	EnOcean,868MHz
Modulation technology	ASK
Transmission range	300m free field, typ. 30m within buildings
EnOcean Equipment Profile (EEP)	A5-09-02



Room 301 Huashen Building,  
Ruanjian Avenue, Nanjing,Jiangsu  
Province  
China

Tel: +86 025 52609811  
Fax: +86 025 52609811  
cuijj@win-shine.com

