

CoreSync Temperature/Humidity Sensor

molex

The Molex Sensor is a maintenance free wireless device that regularly measures and reports the temperature and humidity in a space.

The Sensor is powered by a solar cell and features on-board energy storage that allows operation for days even in total darkness, with socket for optional coin cell battery backup for use in lowest light environments. The slim housing can be easily mounted vertically on walls, using the enclosed 2-sided adhesive tape.



Features and Advantages

EnOcean Wireless Communication	Easily paired with CoreSync Wireless POE GW for communication and data reporting
Self-powered	Long-term reliability and ease of installation
Super-compact size	Allows convenient and unobtrusive placement
Regular reporting	Provides frequent "signs of life" updates
Individualized sensing	Optimizes energy savings; granular temperature and humidity measurement
Connectivity	Connects wirelessly with the CoreSync EnOcean GW, PN 180993-3001.

Specifications

REFERENCE INFORMATION

COMMERCIAL STANDARDS

Agency approvals FCC / ISED

MECHANICAL

Temperature sensing Measurement range:

-4°F to 140°F,
resolution 0.18F,
-20°C to +60°C,
resolution 0.1°C

Humidity sensing Measurement range: 0-100% rh,

resolution 0.4% rh
Accuracy $\pm 4.5\%$ rh across
entire range, $\pm 3\%$ rh
between 20% and 80%

Measurement cycle time: Once every 100s

Operation time in darkness: Typ. 4 days

Operating conditions Temperature: -20°C to +60°C
(-4°F to 140°F)

Humidity: 0 to 93% rh, non-condensing;
IP40, indoor use only

ELECTRICAL

Primary power supply: Indoor light (solar, incandescent, fluorescent, LED) 50 to 100,000 lux

Backup power supply: Optional battery (CR1225 – not included)

DIMENSIONS

76 x 22 x 15 mm
(2.99" x 0.867" x 0.59")

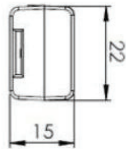
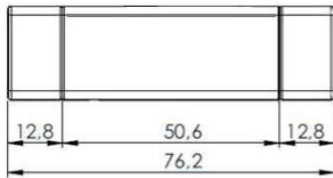
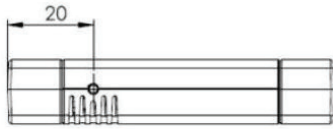
www.molexces.com

Molex is a registered trademark of Molex, LLC in the United States of America and may be registered in other countries; all other trademarks listed herein belong to their respective owners. This information is correct at the time of publication, specifications are subject to change.

CoreSync Temperature/Humidity Sensor

molex

Dimensions



Product Application

The Wireless Temperature/Humidity Sensor Software communicates with the Molex CoreSync Control System for accurate and advanced building management.



Ordering Information

Order No.	SAP No.	Description
180997-0007	Consult Molex	Wireless Temperature/Humidity Sensor

www.molexces.com

Molex is a registered trademark of Molex, LLC in the United States of America and may be registered in other countries; all other trademarks listed herein belong to their respective owners. This information is correct at the time of publication, specifications are subject to change.