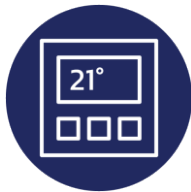


- Smart acknowledge bi-directional communication between a self-powered device and a line-powered device

1st : **Measurement Value**

(e.g. temperature, humidity, set+, set-)

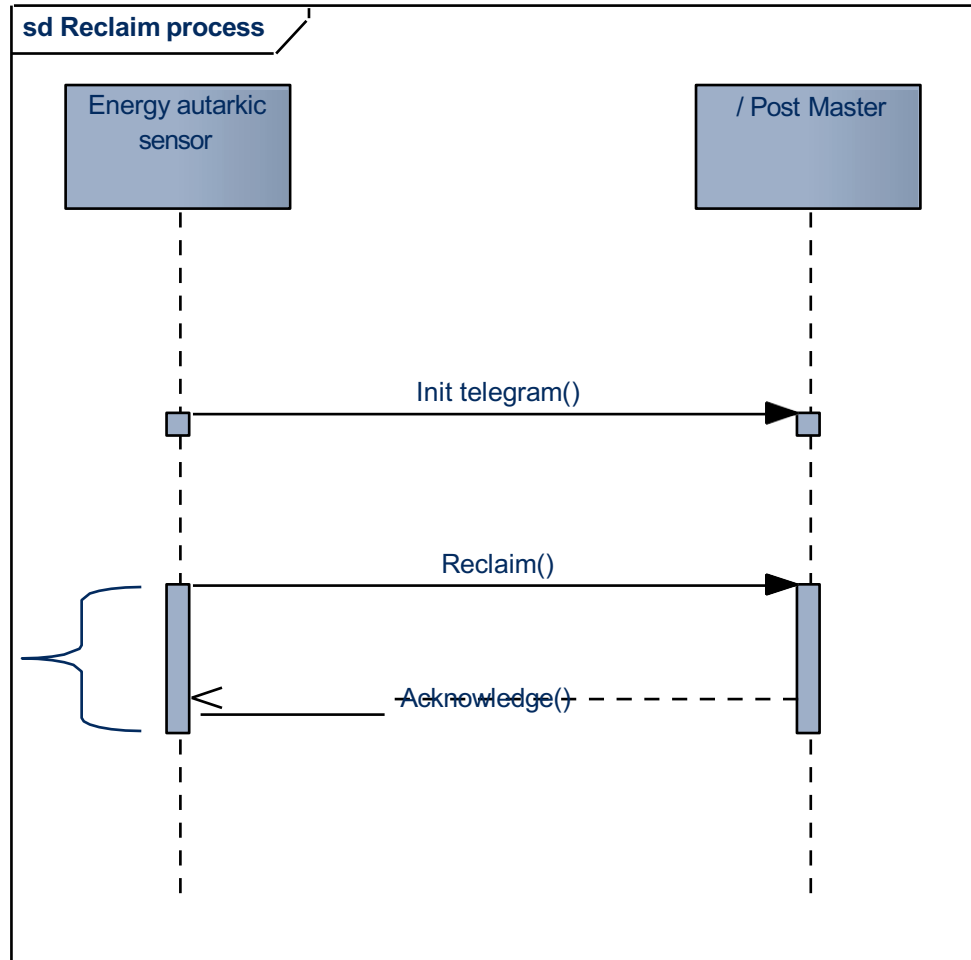


2nd (SMART ACK): **Parameter Update**

(e.g. display value, set-point zero, display "window open!")

Smart ACK Principle

Extremely short time interval
Only here the receiver is
switched on!





enocean alliance
Building Smarter Connectivity

Marian Hönsch
marian.hoensch@enocean.com

Contact

For further information
please feel free to contact us

EnOcean Alliance
5000 Executive Parkway, Suite 302
San Ramon, CA 94583
USA

info@enocean-alliance.org
www.enocean-alliance.org



enocean alliance
Building Smarter Connectivity