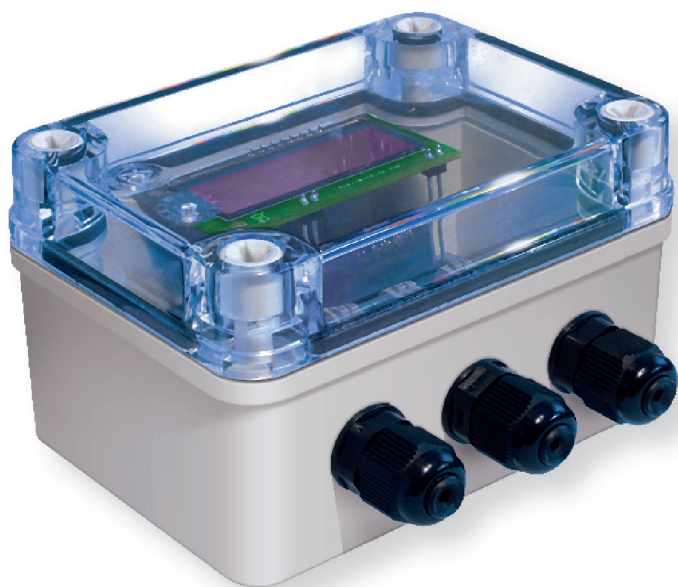


Three Channel Temperature Sensor

Part No: 3CHTEMP.868.BAT

The Pressac Sensing 3 Channel Temperature Sensor is designed to accept upto 3 industry standard PT1000 probes. Ideal for monitoring temperatures remotely, the unit is powered by an internal battery. Dependant on application, the units can be configured to measure 2 different temperature ranges, as well as measure and output data at 4 different sample rates.



Features and Benefits:

- Two Temperature Ranges -20°C to 100°C and 0°C to 85°C
- Battery Powered
- Four Sampling Times - 10, 20, 40 & 100 seconds
- Uses PT1000 Probes - For a multitude of applications



Functionality:

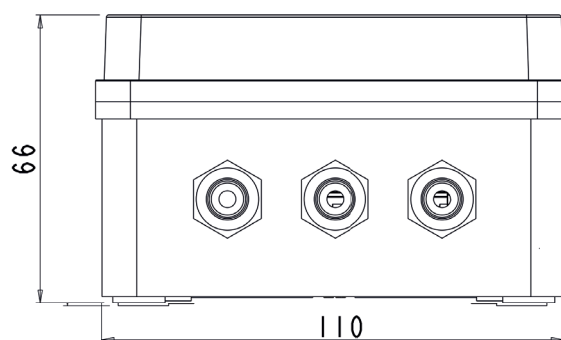
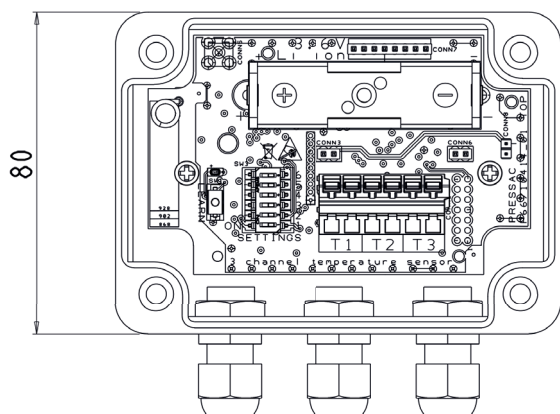
- Quick installation
- Accepts all industry standard PT1000 probes
- Probes can be easily installed and changed
- Engineered to IP65 standards

Applications:

- Legionella monitoring hot, cold and mixed water pipes
- Monitoring temperature within air ducts
- Machine monitoring for preventative maintenance and alerts

Three Channel Temperature Sensor

Part No: 3CHTEMP.868.BAT



TECHNICAL SPECIFICATIONS

Measurement Range and Reporting D1-03-C1	-20°C to 100°C in 1/2°C steps
Measurement Range and Reporting D1-03-C2	0 to 85°C in 1/3°C steps
Measurement Frequency	10, 20, 40 or 100 Seconds
Accuracy	+/- 1°C + Sensor
Telegram Transmission Rate	3 x measurement frequency
Repeater	No
Environment	IP65
Enclosure Material	Polycarbonate case and lid
Telegram	MSC
Calibration	Not Required
Operating Temperature Range	-5°C to +40°C
Storage Temperature Range	-20°C to +55°C
Dimensions of Case	110 x 80 x 66mm
Battery	3.6v AA Lithium Battery
EEP	MSC D1-03-C1 D1-03-C2



Pressac Sensing products incorporate EnOcean® wireless technology, and are fully compliant with EnOcean® protocols. The Pressac Sensing range can be integrated with EnOcean® products from over 300 global manufacturers.

EnOcean® is a widely established and global technology, and has been installed in over 250,000 buildings worldwide. The EnOcean® wireless standard is the first to be ratified as an international standard - ISO/IEC 14543-3-10: together with the EnOcean® Equipment Profiles (EEPs) drawn up by the EnOcean® Alliance, this international standard lays the foundation for fully interoperable, open wireless technology comparable to standards such as Bluetooth and WiFi. The standard can be downloaded from www.iso.org.