

VL-721 STYLE

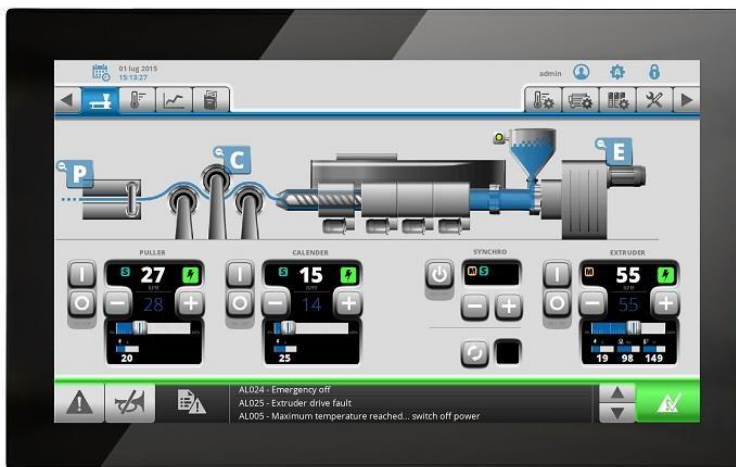
HMI / Control panel with 21.5" TFT, multitouch capacitive glass touchscreen, resolution 1920x1080 pixel (full HD), expanded temperature range -20°-+60°C

Part nr.: 11809

Interfaces:

3x Ethernet, 2x USB Host (2.0), 1x serial (RS-232/RS-422/RS-485), 1x SD card, 2x expansion slot

Supply voltage: 24V DC



The **VL-721 STYLE** is the biggest control panel from STYLE series with capacitive glass touchscreen (multitouch) an a huge amount of interfaces for automation:

3x **Ethernet** 10/100, 2x **USB** Host (2.0) and a combined **serial Interface** (RS-232/RS-422/RS-485), 1x SD card, 2x expansion slot.

The glass touchscreen and the bright 21.5" TFT with 16M colours allow to realise high-class user interfaces with multiple functions and indicators. The software **JMobile Studio** (not included in delivery, has to be ordered separately) is used to create the visualisation and provides the following essential options:

- Full vector graphic support. Native support of SVG graphic objects, transparency and alpha blending
- Data display in numerical, text, bargraph, analog gauges and graphic image formats
- Rich HMI features: data acquisition and logging, trend presentation, alarm handling, scheduler and timed actions
- User management
- E-mail
- RSS feeds
- Wide selection of communication drivers available with multiple-driver communication capability
- On-line and off-line simulation with JMobile Studio
- Rich gallery of objects and symbols

The following chart represents the most important features of the device. Please see the users guide for further information.

Display

Type	TFT
Resolution	1920x1080 (full HD)
Active display area	21.5" diagonal
Colors	16M
Backlight	Yes, LED
Brightness	300 Cd/m ² typ.
Dimmable	Yes

System resources

CPU	ARM Cortex A9 quad core, 800 MHz
Operating system	LINUX RT
RAM	2 GB
Flash	8 GB
Real Time Clock	Yes
RTC backup	Yes, rechargeable battery
Buzzer	Yes

User interfaces

Touchscreen	Yes
Type	Glass, (capacitive) multitouch

Interfaces

Ethernet	1x 10/100/1000 MBit 2x 10/100 MBit
USB	2x Host V2.0, max. 500 mA
Serial port	1x RS-232/RS-422/RS-485, software configurable
SD card	Yes, 1x
Expansion slot	Yes, 2x

Power supply

Supply voltage	24V DC (10..32V DC)
Power consumption	1.7A max. @ 24V DC
Fuse	Yes, resettable fuse

Environmental conditions

Operating temperature	-20°..+60°C (vertical installation)
Storage temperature	-20°..+70°C
Humidity	5..85% rel. humidity, non condensing
Protection class	Front: IP66 Rear: IP20

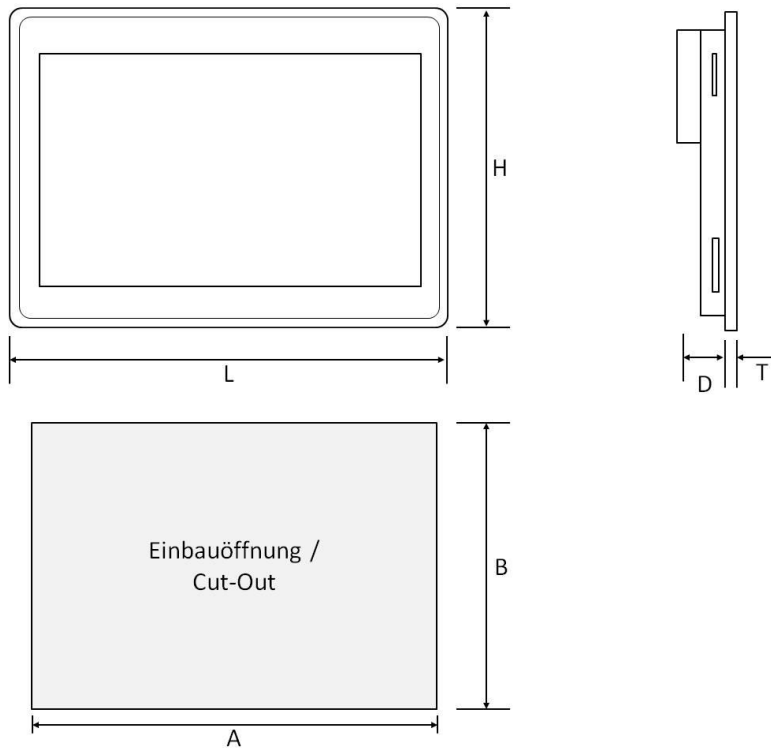
Dimensions and weight

Faceplate (LxH)	552 x 347 mm
Cutout (AxB)	541 x 336 mm
Depth (Housing + front) (D+T)	56 mm + 8.5 mm
Weight	6.1 Kg

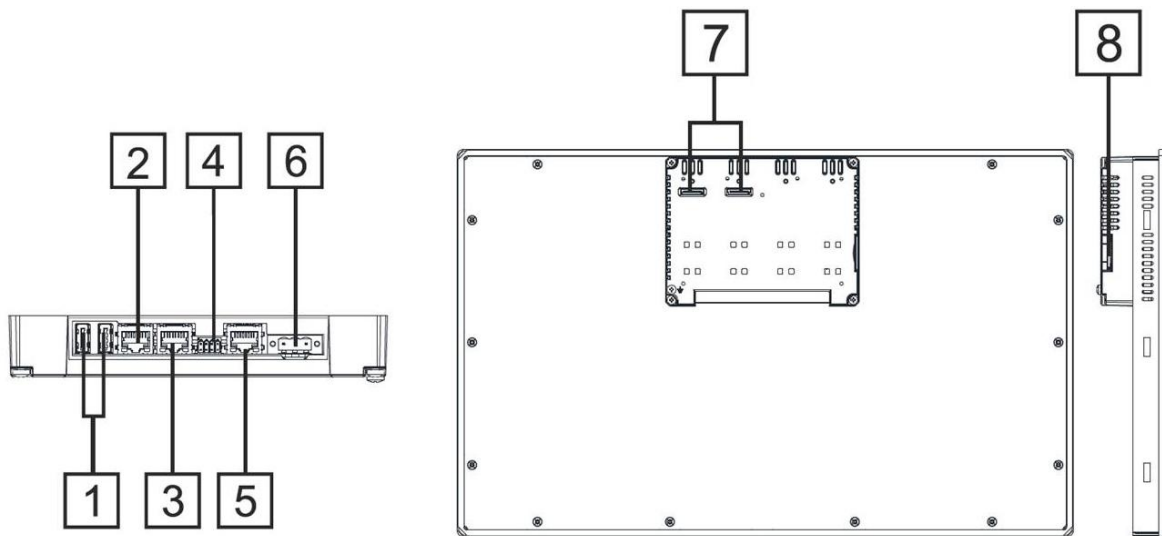
Approvals

CE	Emission EN 61000-6-4 Immunity EN 61000-6-2, for installation in industrial environments
----	---

Dimensions:



Connections:



- 1 USB Host 1+2 (2.0)
- 2 Ethernet/LAN 2
- 3 Ethernet/LAN 1
- 4 Serieller Port / serial port

- 5 Ethernet/LAN 0
- 6 Versorgung / Power supply
- 7 2x Erweiterungs-Steckplatz / Expansion slot for plug-in modules
- 8 SD Kartenslot / SD Card slot

Ordering information

Article text	Part number	Description
VL-721 STYLE	11809	MultiTouch HMI with 21,5" TFT, widescreen, 1920x1080 pixel, full HD, 16M colours, LED backlight, dimmable, 8 GB Flash, 2 GB RAM, ARM Cortex-A9 quad core 800 MHz, Linux RT, 1x Ethernet port 10/100/1000, 2x Ethernet ports 10/100, 2x USB Host (2.0), 1x serial, 1x SD slot, 24V DC, 1.7A, front IP66, rear IP20, glass surface; ambient temperature: expanded, -20°C to +60°C With jMobile runtime and EnOcean Modbus driver Dimensions: front: 552x347mm, cutout: 541x336mm Device hardware identical with EXOR eX721

Version 3, 29.05.2017