

AL-220-00-868 EnOcean AP IP65 230V AC ge EnOcean push button

Quite robust EnOcean push button in IP65

Part nr.: 11256

Interfaces: 1x EnOcean transmitter, same as # 11302, supply voltage: 230V AC



The EnOcean push button **AL-220-00-868 EnOcean AP IP65 230V AC ge** provides a very robust housing (manufacturer EATON) and a standardized 22.5 mm push button. .

When the button is pushed, a **standard EnOcean RPS telegram** is send (**Button A0, pressed.**) When the button is released again, an RPS telegram is send also (**Button A0, released**).

Important: The device has to be supplied by 230V AC!

Technical data

Interfaces

Type	EnOcean transmitter
Number	1
Transmit / Receive frequency	868.0 MHz / ASK
Occupied frequency band	868.0 – 868.6 MHz
Maximum transmission power	Typ. 3 dBm @ 868.300 MHz
EN 300200 receiver category	2

User interfaces

Push button	Push button, 22,5 mm
-------------	----------------------

Housing / connectors

Connection technology	2 pcs Compact-connectors, WAGO 221-413, 0,14 .. 4mm ² , massive/flexible
Housing	UL-V0, light grey, for in- and outdoor applications

Power supply

Supply voltage	230V AC
Power consumption	Typ. 1.6W, max 2.5W

Environmental conditions

Operating temperature	-20°..+60°C
Storage temperature	-20°..+60°C
Humidity	10..95% rel. Humidity, non condensing
Protection class	IP65

Dimensions and weight

Weight	340g
Dimensions	100 x 80 x 80 mm

Standards / approvals

CE	2014/53/EU RED directive 2011/65/EU RoHS directive
Approvals / tests	DIN EN 60950-1:2011 + A12 Cor. 1:2012 + Cor. 1:2012 EN 61000-6-2:2005 EN 61000-6-3:2007 + A1:2011 + Cor 1:2012 EN 301 489-1:2011 V1.9.2 EN 301 489-3:2013 V1.6.1 EN 300 220-2:2012 V2.4.1

Short description

Supply voltage

The AL-220-00-868 EnOcean AP IP65 230V AC ge has to be supplied by 230 V line voltage.

EnOcean transmitter

The integrated EnOcean transceiver of type TCM310 is used to communicate with EnOcean actors directly, and also with the configuration software BL-PC-FLEX, using the EnOcean USB-Stick.

Push button functions

When the button is pushed, a **standard EnOcean RPS telegram** is send (**Button A0, pressed.**) When the button is released again, an RPS telegram is send also (**Button A0, released.**)

You will find the documentation on our homepage www.deuta-controls.net. Once you have installed the software , you will find the manuals in the tool bar under „Show Help“.

Connection and installation

1. Open the 4 screws at the top.



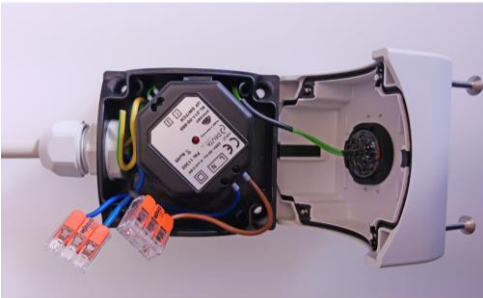
2. Now you can open the lid carefully.



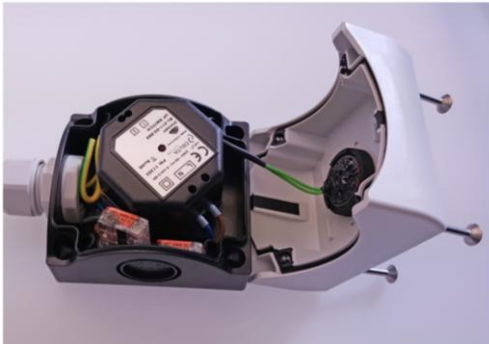
3. There are two connecting terminals (L/N) inside, the contacts can be opened without a tool. The cables are long enough to be pulled out of the device a little bit for a comfort connection with the input lead.



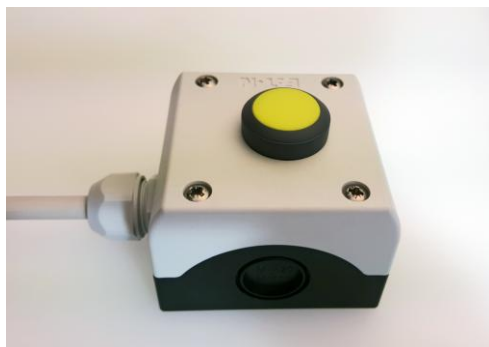
4. Once you have installed the cable, dismantle each wire (11mm) and establish a connection.



5. Replace all wires inside the housing.

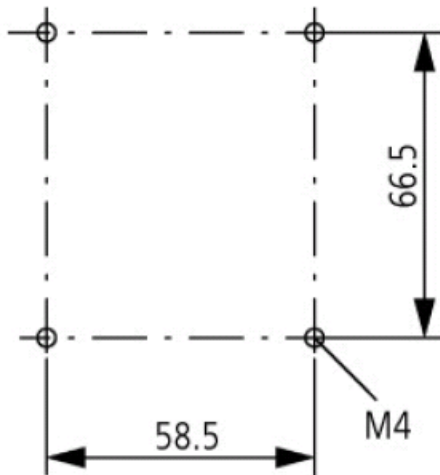


6. Close the housing carefully. Don't clamp any cables between lid and bottom and tighten the screws.



Dimensions: incl. M20 cable gland approx.: 72 x 110 x 68 mm

Fixing bores (Bore diameter 4,5mm)



Ordering information

Article text	Part number	Description
AL-220-00-868 EnOcean AP IP65 230V AC ge	11256	Single EnOcean push-button, IP65, on-wall housing; Colours: button: yellow, housing: light-grey / black; Ambient temp.: standard, +5°C - +50°C; 230V AC, 868 MHz

EU Declaration of Conformity

Hereby the DEUTA Controls GmbH declares that the radio equipment type **AL-220-00-868 EnOcean AP IP65 230V AC ge** is compliant with the directive 2014/53/EU. You can download the complete EU Declaration of Conformity as a pdf-document on our homepage www.deuta-controls.de in the area Service/Downloads (Doc. EUDC2017_127).

Version 31, 29.06.2017
