

Wall switch

**CSW-1/2-U (Rectangle)**

**CSW-1/2-E (Square)**



## Features

- This is a switch with EnOcean protocol for wireless transmissions.
- The device transmits signals without a battery by energy harvesting technology
- Use this indoor or outdoor, in a wet or dry environment with its internal protection (Rated IPX5) structure.
- Aesthetic design to meet atmospheres of modern environment

Thank you for using OPTEx product.

## Notice

- ✓ Please read this manual before installation.
- ✓ Please keep this manual available for future reference.
- ✓ OPTEx is not held responsible for any damage nor collateral indemnification resulting from breakdown and inappropriate usage of this product.

This installation manual uses illustrations of a dual compartment switch. Illustration of single compartment switch is only used where necessary.

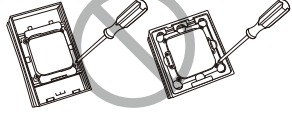
No.5925192

## Safety Precautions

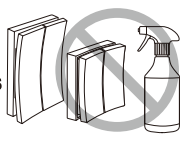
**Avoid hard impacts**



**Do not disassemble nor modify**



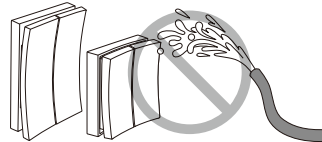
**No cleaning with cleansers with solvents**



**Do not pull or hang down objects on the device. It will lead to breakage.**



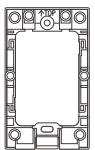
**Avoid locations where water showers or splashes can forcefully hit the device.**



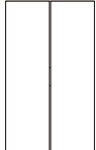
## Device Structure and Accessories

**CSW-1/2 U (Rectangle)**

Mounting Plate



Main Unit



Fixing Screws  
+4×30 Tapping Screws (2pcs)

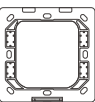


Installation Manual

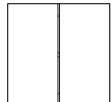


**CSW-1/2 E (Square)**

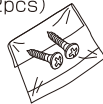
Mounting Plate



Main Unit



Fixing Screws  
+3×30 Tapping Screws (2pcs)



Installation Manual



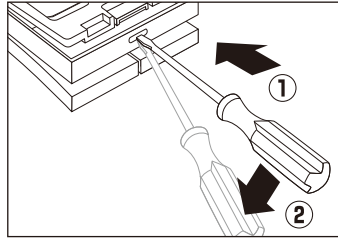
## Installation Process

- ① To remove the Mounting Plate
- ② Placing the Mounting Plate and the main unit.
- ③ Pairing
- ④ Testing Transmissions

### ① How to remove the Mounting Plate

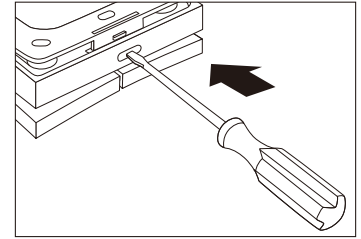
**CSW-1/2-U (Rectangle)**

Insert a flat head driver into a hole located at the bottom of the Main Unit. Push up a tab to unlock.



**CSW-1/2-E (Square)**

Insert a flat head driver into a hole located at the bottom of the Main Unit. Push in a tab to unlock.

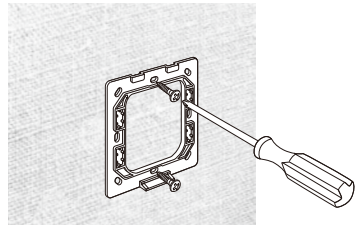
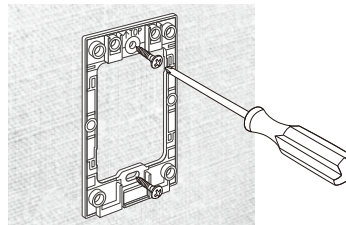


### ② Placing the Mounting Plate and the Main Unit

**Placing the Mounting Plate**

Fix the Mounting Plate at a designated position in a marked [↑ TOP] direction.

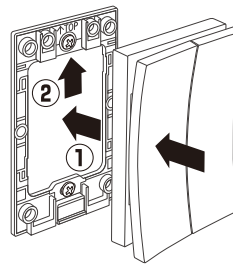
(Do not distort the Mounting Plate by exerting too much force)



**Fixing the Main Unit.**

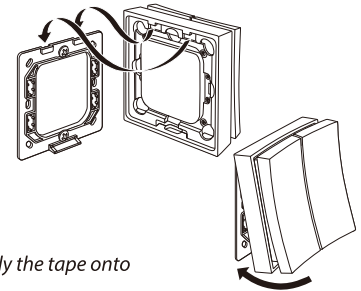
**CSW-1/2-U (Rectangle)**

Slide the Main Unit up into the Mounting Plate.



**CSW-1/2-E (Square)**

Hook the Main Unit onto the upper rim of the Mounting Plate. Press the Main Unit onto the Mounting Plate till it locks.

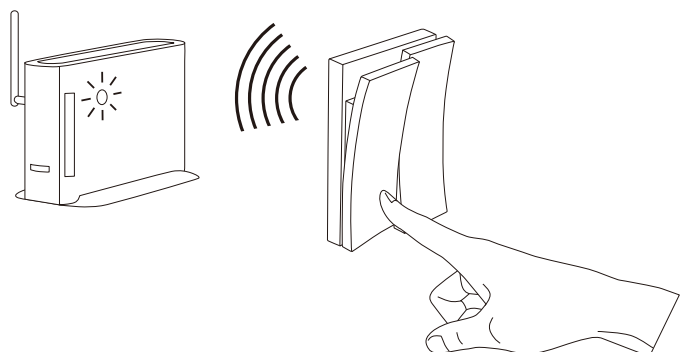


*Note: When using a double-sided tape, apply the tape onto the Mounting Plate.*

### ③ Pairing

• Prepare an EnOcean signal receiving unit in pairing waiting mode. Press down each switch button to register.

• After pairing registrations, make sure that each switch is properly functioning.

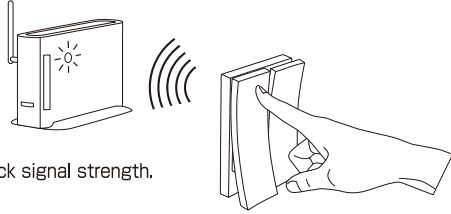


#### ④ Testing Transmissions

Confirm signal transmissions.

Range of signal transmissions is approximately 25m in an open line of sight. Walls (especially metals and blocks) or any kind of separations in between the device and a designated receiving unit affect reaching distance of signal transmissions. Please note that a human presence may also reduce the range by blocking signal transmissions.

Place a receiving unit with enough allowance of a transmission range.



Please refer to documents of a receiving unit for ways to check signal strength.

#### Trouble Shooting

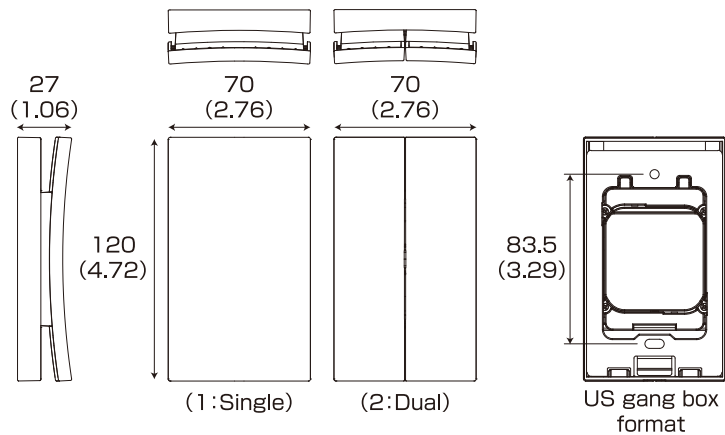
Trouble shooting table		
Symptoms	Causality	Countermeasures
The main unit can not fit to the Mounting Plate.	The Mounting Plate is distorted.	Untighten screws and fix the distortion.
Switch signal is not being transmitted.	Switch button is not pressed sufficiently.	Press on a switch until it makes a clicking sound.
Switch signal is not received by a receiving unit.	The signal is no reaching the receiving unit.	Check signal strength level on a receiving unit.
	Pairing registration is not completed	Repeat a pairing registration of switch buttons.
	Pairing registration has been dissolved.	Check settings on the device and a receiving unit and repeat a pairing registration of switch buttons.
	Transmission is being blocked by a surrounding object (metals and etc. )	Reposition the switch or remove blocking objects.

Please contact a designated technical support in case the device shows malfunctions or symptoms not described above.

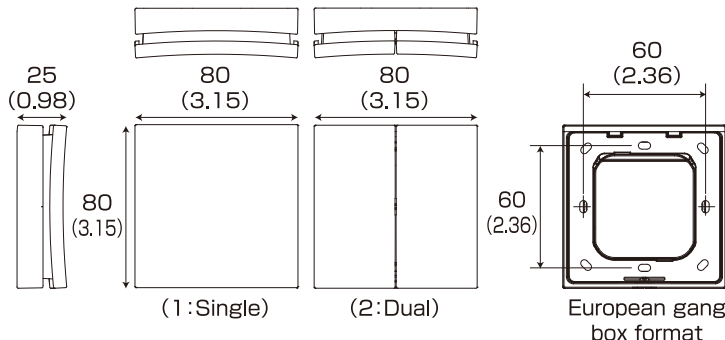
#### Dimensions

##### CSW-1/2-U (Rectangle)

Unit: mm (inch)



##### CSW-1/2-E (Square)



#### Specification Table

Model name	CSW-1/2-U	CSW-1/2-E
	Rectangle footprint	Square footprint
Installation location/ internal protection rate	Wall mount or on any flat surface / IPX5 (applicable to a bathroom, an outdoor terrace and etc.)	
Detection technology	Kinetic pressure	
Durability	Typ: 100,000	
Signal transmission range	25 m ( in an open line of sight)	
RF frequency	US: 902MHz	EU: 868MHz
RF protocol	EPP F6-02-02	EPP F6-02-01 (EnOcean)
Dimensions mm (inch)	W70×H120×D27 W2.76×H4.72×D1.06	W80×H80×D25 W3.15×H3.15×D0.98
Mass	120g(4.23oz)	100g(3.53oz)
Operating temperature	-10°C° to +50°C° (+14°F to +122°F)	
Operation humidity	95% max.	
Accessories	+4×30 Tapping screws (2pcs)	+3×30 Tapping screws (2pcs)
Conformity to standards	FCC, IC	CE, RED

Specification may be subject to change without a pre-notification.

**FC** 902 MHz : FCC : SZV-PTM210U  
IC : 5713A-PTM210U

This device complies with part 15 of the FCC rules and Industry Canada ICES-003. Operation is subject to the following two conditions: (1) This device may not cause harmful interference, and (2) this device must accept any interference received, including interference that may cause undesired operation. IMPORTANT! Any changes or modifications not expressly approved by the party responsible for compliance could void the user's authority to operate this equipment. Le présent appareil est conforme aux CNR d'Industrie Canada applicables aux appareils radio exempts de licence. L'exploitation est autorisée aux deux conditions suivantes: (1) l'appareil ne doit pas produire de brouillage, et (2) l'utilisateur de l'appareil doit accepter tout brouillage radioélectrique subi, même si le brouillage est susceptible d'en compromettre le fonctionnement. IMPORTANT! Tous les changements ou modifications pas expressément approuvés par la partie responsable de la conformité ont pu vider l'autorité de l'utilisateur pour actionner cet équipement.



Conforms to WEEE Directive (2012/19/EU). Do not dispose as general household wastes. Follow national laws/regulations to dispose. Do not burn.



Hereby, OPTEX declares that the radio equipment type CSW-1/2-E is in compliance with RED 2014/53/EU.

The full text of the EU DoC is available at the following internet address: [www.optex.net](http://www.optex.net)

The following list indicates the areas of intended use of the equipment and any known restrictions. For countries not indicated in this list, please consult the responsible Spectrum Management Agency.

868 MHz ; Austria, Belgium, Denmark, Finland, France, Germany, Greece, Ireland, Italy, Luxembourg, The Netherland, Spain, Sweden, United Kingdom, Other non EU: Iceland, Norway and Switzerland.

902 MHz ; USA, Canada

RF emission Frequency and Power;

868 MHz 3 mW e.i.r.p

902 MHz 3 mW e.i.r.p

EU contact information

Manufacturer:

OPTEX CO., LTD. 5-8-12 Ogoto, Otsu, Shiga, 520-0101 JAPAN

Authorised representative in Europe:

OPTEX (EUROPE) LTD. / EMEA HEADQUARTERS

Marandaz House 1 Cordwallis Park, Clivemont Road, Maidenhead, Berkshire, SL6 7BU, U.K.

Manufactured by



5-8-12 Ogoto Otsu Shiga 520-0101 Japan  
TEL. (077) 579-8890 FAX. (077) 579-7120

Printed in JAPAN