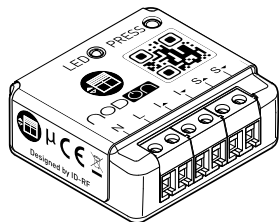


USER GUIDE



ROLLER SHUTTER MODULE

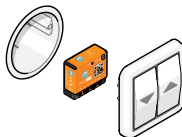


Roller shutter module by NodOn®

Reference: SIN-2-RS-01
 Power supply: 230V AC ~ 50Hz
 Switching capabilities: 230V AC – 10A // 30V DC – 10A
 Maximum engine power: 150 W
 Self-consumption: <1W
 Center radio frequency: 868.3 MHz
 Occupied frequency band: 868.0 à 868.6 Mhz
 RF power Max: +3dBm
 Range: 20-30 meters indoor
 Operational temperature: 0°C to 40°C
 Memory capacity: 24 emitters
 EEP (EnOcean® Profile): D2-05-00
 Dimensions : 40 mm (l) x 44 mm (L) x 16.9 mm (h)
 Weight: 34 g
 Warranty: 2 years

INSTALLATION

NodOn® roller shutter module can connect any type of motorized shutters (roller shutter, awning, garage door...) to a compatible EnOcean® network. Once set up, NodOn® roller shutter module will allow you to remotely or automatically control a motorized shutter with wireless – no battery EnOcean® emitters or sensors (wall switch, remote, opening sensor, motion sensor, card switch, smart home hub...).



DANGER OF ELECTROCUTION



BEFORE ANY INSTALLATION MAKE SURE THE POWER SUPPLY IS DISCONNECTED TO AVOID ANY RISK OF ELECTROCUTION.

Directly cut the power supply from the breaker box to avoid any risk of electrocution. This module is designed to be used power up, a wrong installation can create a fire or an electric shock. If you are not confident about electrical installation, please ask a professional. The roller shutter module must be installed and connected carefully following the instructions of this user guide.

NodOn® will not be responsible for any loss or damage resulting from a non-respect of the instructions of this user guide. Cut the power supply before any operation and don't do any modification if the LED is still blinking green.

Roller shutter module Inputs / Outputs



N - Terminal for the Neutral
 L - Terminal for the Line
 I+ - Input terminal for the wired switch "up"
 I- - Input terminal for the wired switch "down"
 S+ - Engine output terminal way "up"
 S- - Engine output terminal way "down"

Warning: each terminal can accept a wire of 2.5mm² maximum.

Installation procedure

- Cut the power supply.
- Disassemble the wired wall switch which control the roller shutter/awning you want to connect.
- Wire the module according to the diagram figure 1.
- Reassemble the wired wall switch.
- Turn the power back ON.

Installation diagram

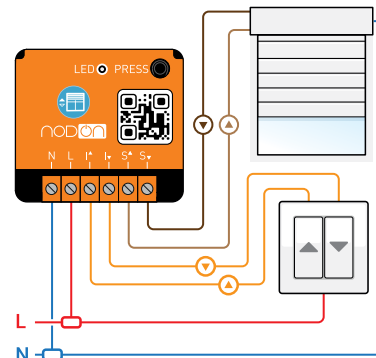


figure 1

AUTO-DETECTION OF SWITCH CONFIGURATION

After turning ON the power supply, do a single push on the wired wall switch. The module has an auto-detection system to automatically detect the type of wired wall switch (back and forth or push-button switch) wired at the input.

CALIBRATION OF THE ROLLER SHUTTER MODULE*

* From the module under power supply



- Do 5 short presses.



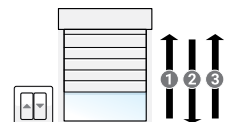
From the wired wall switch



- Put the roller shutter/awning in position up.
- Do 3 times the cycle "down - stop" with the wired wall switch.

Note : The module LED blinks green, meaning the calibration has well started.

Cancel calibration: It is possible to stop the calibration at any moment to avoid an accident. From the module under power supply, perform again 5 brief presses. From the wired switch, press once on the switch.



- 2/3 The roller shutter/awning confirms the auto-calibration by performing a complete cycle "down - up - down" **.

** If the cycle is reversed (down/up/down), switch S+ and S-.

ADD AN EMITTER

To add a remote, a wall switch or a card switch (EnOcean® compatible) you must enter the pairing mode.

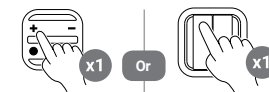
Note: NodOn® roller shutter module has a remote commissioning mode. It can remotely be paired from a compatible smart home hub.

Two modes :

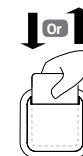
From the module (under power supply)



- Launch the pairing by doing 3 consecutive presses on the button of the module. The LED blinks in red.



- Remote or wall switch: You have now 30 seconds to pair your emitter by pressing on the button of your choice, this one will control the rise of your roller shutter/awning.



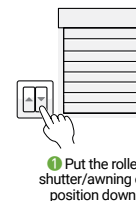
- Card switch: You have now 30 seconds to pair your emitter by inserting or removing the card into the reader. The card movement during pairing will control the lowering of your roller shutter/awning.



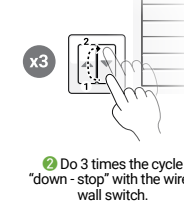
- The module LED blinks twice in green, confirming the pairing of the two devices.

Note: if the LED blinks orange during the pairing procedure, it means that more than 24 emitters are paired and that no more emitter can be paired. You must remove one emitter to add a new one.

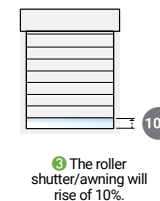
From the wired wall switch



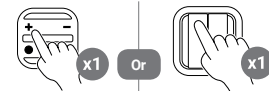
- Put the roller shutter/awning on position down.



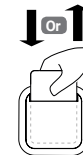
- Do 3 times the cycle "down - stop" with the wired wall switch.



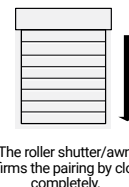
- The roller shutter/awning will rise of 10%.



- Remote or wall switch: To pair your emitter briefly press the button of your choice, this one will control the rise of your roller shutter/awning.



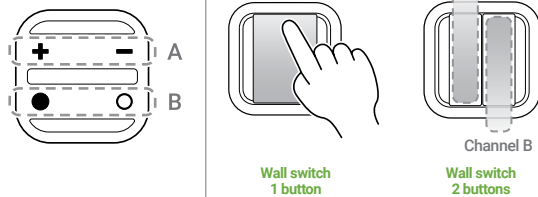
- Card switch: You have now 30 seconds to pair your emitter by inserting or removing the card into the reader. The card movement during pairing will control the lowering of your roller shutter/awning.



- The roller shutter/awning confirms the pairing by closing completely.

USE OF THE REMOTE OR WALL SWITCH*

* EnOcean® (EEP : F6-02-02 ou F6-02-01)



Note: the buttons of the remote work in pairs (A or B).

Note: the 2 buttons of the wall switch work in channels (A or B).

Opening the roller shutter/awning

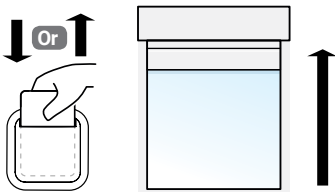
Do a brief press on the button « up » you will have defined during the pairing procedure (see "add a remote/wall switch"). A new press on this button will stop the roller shutter/awning race.

Closing the roller shutter/awning

Do a brief press on the opposite button of button « up » you will have chosen during the pairing procedure (see pair A or B). A new press on this button will stop the roller shutter/awning race.

USE OF THE CARD SWITCH*

* EnOcean® (EEP : F6-04-01)



If you have removed the card from the reader during pairing, then the removal movement will close your roller shutter/awning and the opposite movement (insertion) will open the roller shutter/awning.

If you have inserted the card into the reader during pairing, then the insert movement will close your roller shutter/awning and the opposite movement (removal) will open the roller shutter/awning.

UNPAIRING THE EMITTER

From the module or the wired wall switch (receiver under power supply)

Remote or wall switch

Do the same procedure as pairing (see "add an emitter") by taking care of pushing on the button previously chosen to define the state "up" of your roller shutter/awning.

Card switch

Do the same procedure as pairing (see "add an emitter") by taking care of doing the same movement chosen for the card into the reader (insertion or removal) to define the state "down" of your roller shutter/awning.

RESET PROCEDURE

- 1 Press more than 5 seconds the button of the receiver. The LED blinks orange.
- 2 Press once again the button to confirm the reset. If the reset is correct, the LED blinks in red and green, if not it stops blinking. Start again if necessary.
- 3 Your receiver has now its original settings.

SMART HOME HUB

Pairing the roller shutter module with a smart home hub

NodOn® roller shutter module can be controlled by an EnOcean® compliant smart home hub.

- 1 Put the roller shutter module under power supply.
- 2 Open the interface of your smart home hub and launch the pairing mode.
- 3 Follow the instructions of your smart home hub.
- 4 Once the pairing is confirmed, you can create your own scenarios.

The pairing procedure can be different according to your smart home hub, please refer to the user guide for more information.

Find the list of compliant smart home hubs on www.nodon.fr

Note: to unpair the roller shutter module, repeat a similar procedure or refer to the user guide of your smart home hub.

ACTIVATION OF REPEATER MODE*

*module under power supply

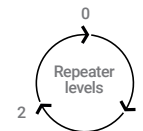
When the repeater mode is activated, the roller shutter module will repeat all the messages from EnOcean® network, and so increase the range of equipments around it.

The repeater mode has 3 levels:

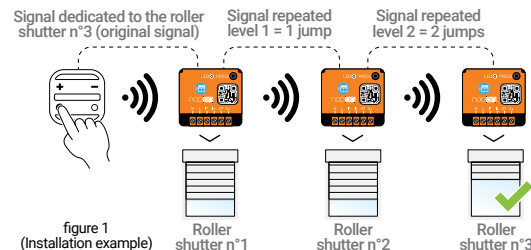
- **Level 0:** repeater mode is deactivated
- **Level 1:** the signal is repeated (1 jump, see figure 1)
- **Level 2:** the signal is repeated (2 jumps, see figure 1)

Warning: by default during the first installation the repeater mode is at level 0.

Incrementation of the three levels for repeater mode:



Principe de fonctionnement du mode répéteur :



Access to repeater's next level:



Level 0 to level 1 :

- 1 Do 2 short presses.
- 2 The module LED blinks twice in green, confirming the activation of repeater's next level.

Level 1 to level 2 :

- 1 Do 2 short presses.
- 2 The module LED blinks three times in green, confirming the activation of repeater's next level.

Level 2 to level 0 (repeater mode is deactivated) :

- 1 Do 2 short presses.
- 2 The module LED blinks once in green, confirming the repeater's mode deactivation.

SUPPORTED PROFILES (EEP)

F6-02-01	A5-07-02	A5-08-03
F6-02-02	A5-07-03	A5-08-08
F6-04-01	A5-08-01	
A5-07-01	A5-08-02	

USE CAUTIONS

- Never use the device if it is not correctly installed and placed inside a connecting box in conformity with the current norms.
- Keep the product far away from water.

DECLARATION OF CONFORMITY

- EN 60669-1 : 1999+A1:02+A2:08 - EN 60669-2-1 : 2004+A1 : 09+A12 : 10
- EN301489-01 V2.1.1 - EN301489-03 V2.1.1
- EN300220-2 V3.1.1
- EN62479 : 2010
- 2012/19/EC WEEE Directive
- 2006/95/EC
- 2014/35/EU

PICTOGRAM



Hereby, ID-RF SAS declares that this radio equipment is conform to the RED directive 2014/53/UE. The integral text of the EU declaration of conformity is available at the following online address: www.nodon.fr « support » section.



The presence of this symbol on a product indicates that this one is conform to the European directive 2012/19/UE. Find out more about the provisions in force in your region regarding the separate collection of electrical and electronic devices. Respect the local rules and do not throw out the product with common domestic wastes. The correct rejection of ancient products allows to preserve the environment and health.



This product must be used indoor only.



This product is conform to EnOcean® radio protocol.

CONTACT

Manufacturer and importer:
ID-RF SAS
121 rue des Hêtres
45590 St CYR EN VAL (FRANCE)

AFTER SALES

www.nodon.fr section "support"
contact@nodon.fr

For user guides in other languages, please visit
www.nodon.fr/notices