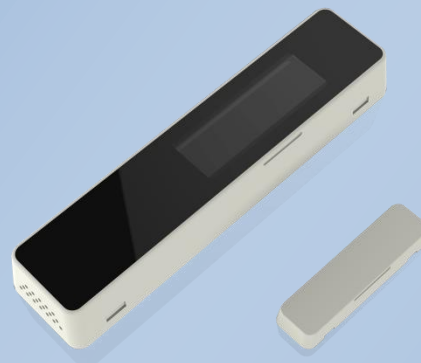


## LD-MC/A Wireless Magnet Contact

LD-MC is a wireless magnet contact. Powered by a solar cell, it works absolutely maintenance-free. An integrated energy store allows operation for several days even in total darkness.

The reed contact housing and the magnet housing are very small. This means that the magnet contact is unobtrusively mountable at every window frame made of aluminum, plastic or wood.



### GENERAL DATA

Power supply	Solar
Operating temperature	-20°C to +60°C

### MECHANICAL DATA

Dimensions of reed contact housing	90.5×21.5×13.5mm
Dimensions of magnet housing	37×10×5mm
Material	PC, white
Installation	Pasted

### ELECTRICAL DATA

Start up time with empty energy store	Typ.2.5min@400lx/25° C
Initial operation time in darkness	Typ. 6 days
	Energy storage fully charged, RF signals every 25 min. on average

### WIRELESS DATA

Antenna	Internal
Radio technology	EnOcean,868MHz
Modulation technology	ASK
Transmission range	300m free field, typ. 30m within buildings
EnOcean Equipment Profile (EEP)	D5-00-01



Room 201 Huashen Building,  
Ruanjian Avenue,  
Nanjing, Jiangsu Province  
China  
Tel: +86 025 52609811  
Fax: +86 025 52609811  
yanw@win-shine.com



enocean®

