



NodOn® by ID-RF

Manufacturer & Importer

ID-RF SAS
121 rue des Hêtres
45590 St CYR EN VAL
FRANCE

For more information : www.nodon.fr
Pour plus d'informations : www.nodon.fr
Para más información : www.nodon.fr
Für die Informationen : www.nodon.fr
Voor informatie : www.nodon.fr



©ID-RF. All rights reserved.

QUICK START GUIDE



WALL SWITCH

WALL SWITCH

Reference: CWS-2-1-0x
Center radio frequency : 868.3 MHz
Occupied frequency band : 868.0 to 868.6 Mhz
RF power Max : +5dBm
Indoor range: 30m
Operating temperature: -10°C / 50°C
Maximum operating altitude: 2000m
Ingress Protection factor: IP 20
EEP (EnOcean® Profile): F6-02-01
Dimensions: L 80mm x W 80mm x 15mm
Weight: 53g
Warranty: 2 years

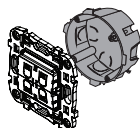
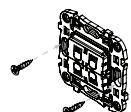


INSTALLATION

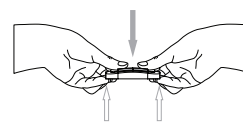
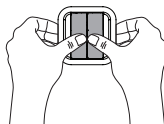
Adhesive bonding
Fixation par adhésifs
Fijación adhesiva
Klebemittel bekleben
Zelfklevende fixatie



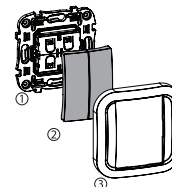
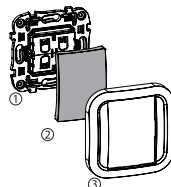
Screws mounting*
Montage par vis*
Tornillos para ensamblaje*
Befestigungsschrauben*
Fixatie met schroef*



INSTALLATION

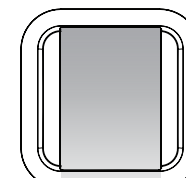


Push in the middle to open
Pousser au milieu pour ouvrir
Presionar en la mitad para abrir
Drücken Sie die Mitte zum Öffnen
In het midden drukken om te openen

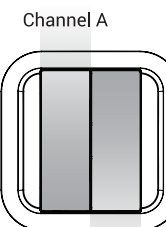


Single or double button assembly
Montage simple ou double boutons
Ensamblaje de botones simple o doble
Montage der Einzel- und Doppeltasten
Montage enkelvoudige of dubbele schakelaars

USAGE



Channel A



Channel B

*not included - *non incluses - *no incluidos - *nicht enthalten - *niet bijgesloten