

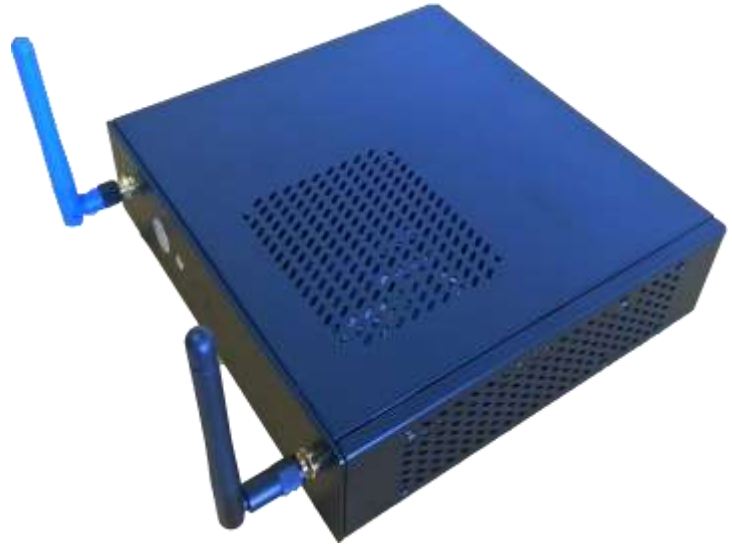


BSC Building-Controller

Wireless Building server I with WLAN and if need be M2M communication.

The BSC Building Controller is a server of small and fan-less design in the industry standard, which can be mounted anywhere. On the back of an intended VESA mounting MIS-D monitor with special screws. Otherwise fastening with slots with suspension opening at the rear.

The Linux operating system is installed as well as the Wireless Building Visualization and Control Software. The wireless antenna module is integrated, a power supply is included. The server is locked for other applications. The power consumption is only 11 or 13 watts. For power supply a switching power supply unit 230V/12V DC is included. The 12V cables can be used for permanent connection to a switching power supply unit in a box with wall outlet.



All data and events are saved to a database for a predefined period. There is a net memory capacity of up to 24 GB available for data. As protection against data loss, data is stored redundantly on a hard disc partition using a special process. In addition, data can be stored externally, e.g. on an USB stick.

The installed Wireless Building Visualization and Control Software visualizes the switch positions of actuators and the consumption of taught-in meters for electricity, gas, water and heat. On the other hand, direct hook-ups and controls can be made using preset software links. For this purpose all it takes is a click of a mouse or a touch on a tablet PC, smartphone or notebook. This hardware is not included, so it can be selected according to the personal needs of the user.

If an ETHERNET network is available, a building surface area of 200 to 400m² can be covered with one Wireless IP gateway IPG170.

The BSC building controller is equipped with a WLAN antenna to permit wireless WLAN communication inside the building with note-books, tablet PCs and/or smartphones. A notebook or PC can also be connected by cable.

If there is no internet available, tablet PC and/or smartphones can be connected to an existing in-house wireless access point or router with an integrated wireless access point. Only for speech recognition an internet connection is required.

For external communication (M2M), the Building Controller is equipped as standard with a GSM modem. Recognizable by the third antenna for communication over the GSM mobile network.

Provided an internet access exists, it permits external access by smartphone and/or tablet PC for visualization and control. This is free of charge on the building side. However, smartphones should have a flat rate. Very simple and secure registration using quickcon[®] technology. If no internet access exists, the data communication packet is required to permit external access.

GSM is the Global System for Mobile Communications which is used for mobile radio (D and E networks in Germany) and to exchange data packets



BSC Building-Controller

Specifications:

Processor:	Intel® Atom™ N2800 (2 x 1,86 GHz)
Chip set:	Intel NM10 Express
Working memory:	2 GB DDR3
Fixed disk storage:	120GB SSD
Graphics function:	Intel® GMA
Interface:	1 x LAN RJ-45 Intel® 10/100/1000
	1 x WLAN 802.11 b/g/n
	4 x USB 2.0 (2 x High-Current 1.3 A)
	1 x HDMI
	1 x VGA
	1 x Line out 1 x Mic in

Power consumption

without GSM Modem:	11 W
with GSM-Modem:	13 W

Dimension:	199 x 180 x 39 mm
------------	-------------------