



Single Pole (One Location)

Wireless Occupancy Sensor Products

Cat. No. WSS10, WSC04, WSC15, and WSS0S

Incandescent 800W @ 120V

Ballast 1200VAC @ 120V, 2700VA @ 277V

120-277VAC, 50-60Hz, Motor: 1/4 HP @ 120V

Wireless Occupancy Sensor Products INSTALLATION INSTRUCTIONS

WARNINGS AND CAUTIONS:

- To be installed and/or used in accordance with appropriate electrical codes and regulations.
- If you are unsure about any part of these instructions, consult a qualified electrician.
- WSS0S Wireless Remote Switch can be used for additional switches (3-way and 4-way), no wires necessary.
- Disconnect power at circuit breaker or fuse when servicing, installing or removing fixture.
- Use this device only with copper or copper clad wire. With aluminum wire use only devices marked CO/ALR or CU/AL.
- Recommended minimum wall box depth is 2-1/2".

ADVERTENCIAS Y PRECAUCIONES:

- Debera ser instalado y/o usado en cumplimiento con los códigos y regulaciones eléctricas.
- Si usted está inseguro acerca de cualquier parte de estas instrucciones, consulte a un electricista calificado.
- Interruptor remoto inalámbrico WSS0S puede ser usado con interruptores adicionales (3 o 4 vías), no cables son necesarios.
- Desconectar la potencia en el interruptor o fusible cuando se de servicio, instale o remueva la luminaria.
- Usar este dispositivo únicamente con cable de cobre o cobre estanoado. Con cables de aluminio usar únicamente dispositivos marcados CO/ALR o CU/AL.
- Mínima profundidad de caja recomendada es de 6.35 cm (2-1/2").

AVERTISSEMENTS ET MISES EN GARDE:

- Installer ou utiliser conformément aux codes de l'électricité en vigueur.
- À défaut de bien comprendre les présentes directives, en tout ou en partie, on doit faire appel à un électricien qualifié.
- L'interrupteur-détecteur WSS0S peut être utilisé avec des dispositifs électriques ordinaires (à trois et à quatre voies), et ce, sans requérir de câblage supplémentaire.
- Profondeur recommandée pour la boîte murale : 6,4 cm.
- Couper l'alimentation au fusible ou au disjoncteur avant de manipuler, d'installer ou de retirer les luminaires commandés. Couper l'alimentation au fusible ou au disjoncteur avant de manipuler, d'installer ou de retirer les luminaires commandés.
- RN'utiliser ce dispositif qu'avec du fil de cuivre ou plaqué cuivre; en présence de fil d'aluminium, utiliser seulement les dispositifs portant la marque CU/AL ou CO/ALR.

Tools needed to install your Switch:

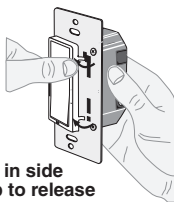
Slotted/Phillips Screwdriver
Pencil
Wire Nuts

Electrical Tape
Cutters

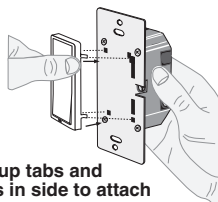
Pliers
Ruler

Changing the color of your Switch:

Color change kits are available from Leviton. To change color of frame, proceed as follows:



Push in side at tab to release

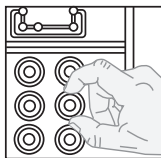
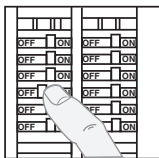


Line up tabs and press in side to attach

INSTALLING YOUR SWITCH

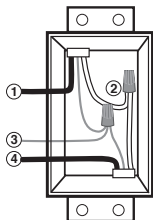
NOTE: Use check boxes when Steps are completed.

Step 1 WARNING: TO AVOID FIRE SHOCK OR DEATH; TURN OFF POWER at circuit breaker or fuse and test that power is off before wiring!



Step 2 Identifying your wiring application (most common):

NOTE: If the wiring in your wall box does not resemble this configuration, consult a qualified electrician.



Single Pole

- Line (Hot)
- Neutral
- Ground
- Load

Step 3a Single Pole Wiring Application:

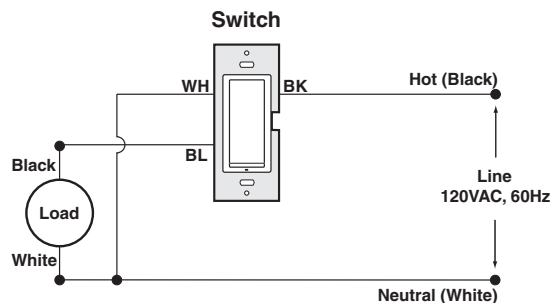
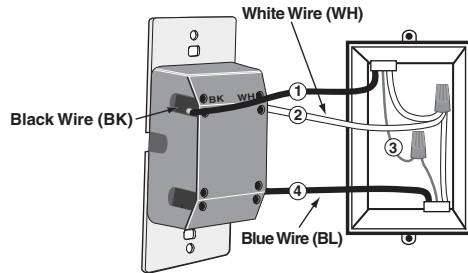
NOTE: For 3-way applications, 4-way and more, use the WSS0S Wireless Remote.

WIRING SWITCH:

Connect wires per WIRING DIAGRAM below as follows:

- Connect (Hot) wire from wall box to black wire on switch.
- Connect (Load) wire in wall box to blue wire on switch.
- Connect (Neutral) wire in wall box to white wire on switch.

NOTE: For NO Neutral model, white wire will not be available.



Step 3b Single Pole Wiring Application:

NOTE: To access dip switch settings, lift up the bottom of the switch pad.

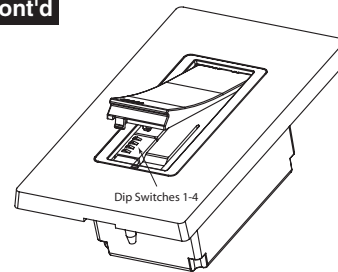
DIP SWITCH SETTINGS:

Manual ON / Auto ON mode: (factory: manual mode) Occupancy Sensor WSC** - Auto mode can be enabled with the use of additional (3) AAA batteries or a 5-24VDC connection.

Walk-through: On or Off (can be used only in Auto-ON mode)

Timeout: 2, 10, 20, 30min

Step 3b cont'd



DIP SWITCH SETTINGS		
Dip Switch	OFF Position	ON Position
1	Auto ON/Manual OFF	Manual ON
2	Walk Through OFF	Walk Through ON
2 Min Time-Out	OFF Position	ON Position
3	X	-
4	X	-
10 Min Time-Out	OFF Position	ON Position
3	X	-
4	-	X
20 Min Time-Out	OFF Position	ON Position
3	-	X
4	X	-
30 Min Time-Out	OFF Position	ON Position
3	-	X
4	-	X

Factory Settings: The sensor is shipped from the factory to work in almost all situations, without any adjustments. The factory settings are: Manual mode, when entering the room, the wireless momentary switch will need to be turned ON. Wireless occupancy sensor will keep the lights on until the room is vacant then turn the lights OFF after timeout period. The PIR technology is active. Factory time-out is 10 min.

Time-Outs: The Sensor has four time-out settings: 2, 10, 20, or 30 min.

- Fixed Time-Out: The value of this time-out is user selected through the use of the Dip Switch Settings.

Walk-Through Time Delay: The walk-through feature, which is only active in the Auto-On mode, is useful when a room is momentarily occupied. With this feature, the Sensor will turn the lights OFF shortly after the person leaves the room. The walk-through feature works in the following manner: When a person enters the room, the lights will turn ON. If the person leaves the room before the walk-through time-out of 2.5 minutes, the Sensor will turn the lights OFF within 2.5 minutes of no occupancy detected. If the room is occupied for longer than 2.5 minutes, the Sensor will enter the Occupied Mode with the time-out duration specified by the Dip Switch setting.

Step 3b cont'd

Cat. No. WSS10 has a single switch pad that toggles the relay and its corresponding load, ON and OFF. If the relay is OFF, the relay will turn ON when the push-button is pressed, and remain ON in the presence of motion. In the absence of motion, the Sensor Unit will Time-Out and turn relay OFF. If in Auto ON/Manual OFF, time delay will start once space is vacant.

NOTES:

- When the lights are on, the Motion Indicator LED will blink red (1 blink per minute) every time motion is detected.
- When the Time-Out expires and the relay turns OFF, a 30 second vacancy confirmation exists to turn the relay back ON.
- In Manual-ON mode, the button must be pressed to turn the lights ON. In the absence of motion, the unit will Time-Out and turn the lights OFF.

LEARN MODE:

When using the Wireless Occupancy Products together, they must LEARN the other devices to perform as desired.

- WSC04 and WSC15 – Wireless Occupancy Sensor – has learn button on device, under front plastic tab
- WSS10 – Wireless Momentary Control Switch – use switch pad for learning
- WSS0S – Wireless Remote Switch – use switch pad for learning

Programming – using Momentary Switch (WSS10)

- To enter programming, press and hold the switch pad for 15 seconds
 - When in programming mode,
 - 1 AMBER LED flash, 1 second pause = in programming

There are 2 modes in programming, LEARN and CLEAR modes. Tap the switch pad to select which mode you would like.

- 1 AMBER LED flash = LEARN mode
- 2 AMBER LED flashes = CLEAR mode

Once you have selected the desired programming mode, press and hold the pad again for 5 seconds to ENTER the desired mode.

Learn mode:

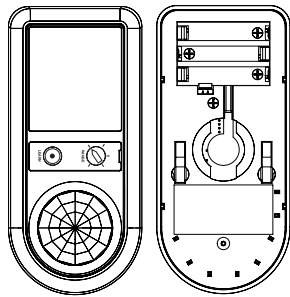
- 1 Red flash = no learned devices
- 1 Green flash = 1 learned devices
- 2 Green flashes = 2 learned devices
- 3 Green flashes = 3 learned devices
- Etc. (up to 6 devices)

- On remote switch or occupancy sensor, you must press the switch pad to send a signal for learning.
 - AMBER LED on for 2 seconds = acknowledgement, device is learned
 - GREEN LED on for 2 seconds = device is unlearned

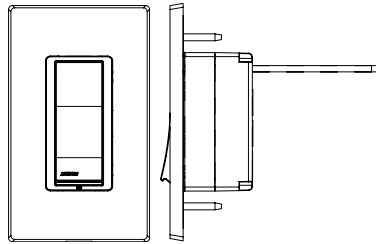
Step 3b cont'd

- Clear Mode
 - 1 Red flash = no learned devices
 - 1 Green flash = devices exist
- Press and hold the switch pad for >5 seconds. After the button is released, the LED will flash red to confirm all learned devices have been installed.
- **Proceed to Step 4.**

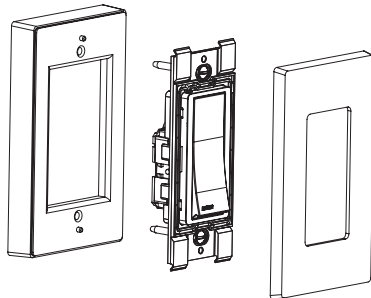
NOTE: Product will leave the learn or clear modes, without change, after 20 seconds of inactivity.



WSC04/WSC15

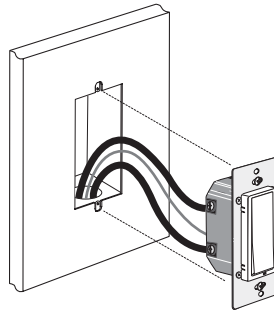


WSS10



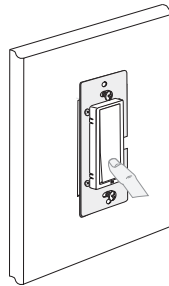
WSS05

Step 4 Testing your Switch prior to mounting in wall box:



NOTE: Dress wires with a bend as shown in diagram in order to relieve stress when mounting device.

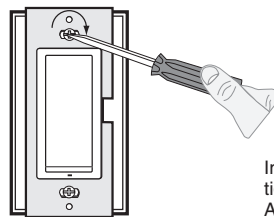
- Position all wires to provide room in outlet wall box for device.
- Ensure that the word "TOP" is facing up on device strap.
- Partially screw in mounting screws in wall box mounting holes.



- Restore power at circuit breaker or fuse.
- Press pad until locator light is OFF. Lights should turn ON.

If lights do not turn ON, refer to the TROUBLESHOOTING section.

Step 5 Switch Mounting: TURN OFF POWER AT CIRCUIT BREAKER OR FUSE.



Installation may now be completed by tightening mounting screws into wall box. Attach wallplate.

Step 6 Restore Power:



Restore power at circuit breaker or fuse. **Installation is complete.**

OPERATION

NOTE: The locator light will illuminate when the load is in the OFF position to facilitate access in the dark.

Charge time: 2-4 minutes depending on strength of light source

Occupancy Sensor minimum light requirement: 40 LUX

Min 25W (No neutral version)

Auto ON: will function with out (3) AAA batteries for 24-48 hours. For extended Auto ON feature, be sure to use batteries or 5-24VDC power connection.

Push Pad (Default settings)

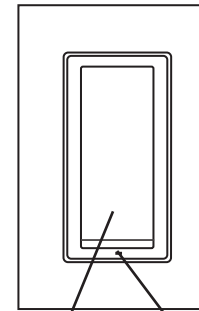
Turn ON from OFF position:

Tap – Lights turn ON.

Turn OFF from ON position:

Tap – Lights turn OFF.

Cleaning: Clean with a damp cloth. **DO NOT** use chemical cleaners.



Push Pad

Locator Light

TROUBLESHOOTING

- **Lights Flickering**
 - Lamp has a bad connection.
 - Wires not secured firmly under terminal screws of switch and/or remote.
- **Light does not turn ON and Locator LED does not turn ON**
 - Circuit breaker or fuse has tripped.
 - Lamp is burned out.
 - Lamp Neutral connection is not wired.

For additional information, contact Leviton's Techline at 1-800-959-6004 or visit Leviton's website at www.leviton.com

Covered by one or more US & Foreign Patents and patents pending
Copyright© 2008 Leviton Manufacturing Co., Inc.
All Rights Including Trade Dress Rights Reserved

FCC COMPLIANCE STATEMENT

This device complies with part 15 of the FCC rules. Operation is subject to the following two conditions: (1) This device may not cause harmful interference, and (2) this device must accept any interference received, including interference that may cause undesired operation. Any changes or modifications not expressly approved by Leviton could void the user's authority to operate this equipment.

LIMITED 5 YEAR WARRANTY AND EXCLUSIONS

Leviton warrants to the original consumer purchaser and not for the benefit of anyone else that this product at the time of its sale by Leviton is free of defects in materials and workmanship under normal and proper use for five years from the purchase date. Leviton's only obligation is to correct such defects by repair or replacement, at its option, if within such five year period the product is returned prepaid, with proof of purchase date, and a description of the problem to **Leviton Manufacturing Co., Inc., Att: Quality Assurance Department, 59-25 Little Neck Parkway, Little Neck, New York 11362-2591**. This warranty excludes and there is disclaimed liability for labor for removal of this product or reinstallation. This warranty is void if this product is installed improperly or in an improper environment, overloaded, misused, opened, abused, or altered in any manner, or is not used under normal operating conditions or not in accordance with any labels or instructions. **There are no other or implied warranties of any kind, including merchantability and fitness for a particular purpose**, but if any implied warranty is required by the applicable jurisdiction, the duration of any such implied warranty, including merchantability and fitness for a particular purpose, is limited to five years. **Leviton is not liable for incidental, indirect, special, or consequential damages, including without limitation, damage to, or loss of use of, any equipment, lost sales or profits or delay or failure to perform this warranty obligation.** The remedies provided herein are the exclusive remedies under this warranty, whether based on contract, tort or otherwise.

LEVITON INSTRUCTION SHEET/MANUAL SPECIFICATIONS

- Artwork No/Rev Level: PK93664-10-00-0A
- Color(s): Black over
 - 1. _____ 2. _____
 - 3. _____ 4. _____
- Font Families: Helvetica
- Material
 - Type: 40 Lb. offset
- Coating: _____
- Paper size:
 - Overall size: 14" X 8.5"
 - Final fold size: 2.3" X 4.25"

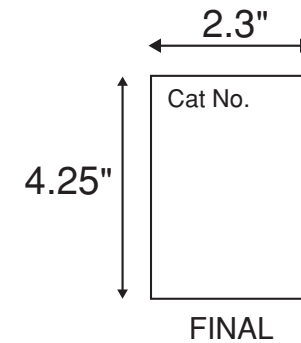
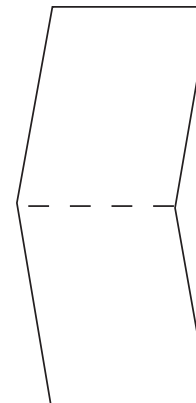
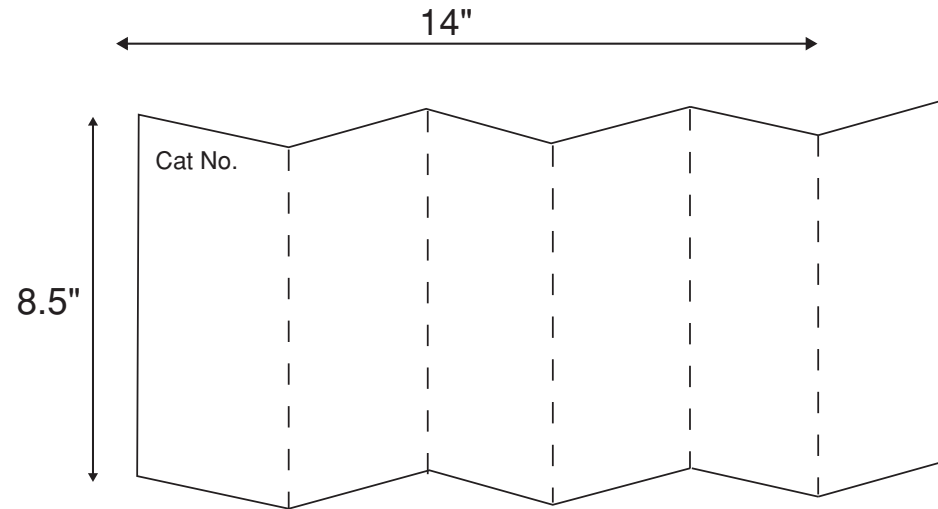
DOCUMENTATION

- ECO No.: 7095512
- Artist: CD8 Date: 11/06/08

The information in this document is the exclusive PROPRIETARY property of LEVITON MANUFACTURING COMPANY, INC. It is disclosed with the understanding that acceptance or review by the recipient constitutes an undertaking by the recipient. (1) to hold this information in strict confidence, and (2) not to disclose, duplicate, copy, modify, or use the information for any purpose other than that for which disclosed.

Copyright © 1997 Leviton Mfg. Co. Inc.
Unpublished, All Rights Reserved

FOLD SCHEME



— — — — — Fold Line